



Chai Chee Estate is a fine example of a community that *exhibits mutual respect, community spirit and civic awareness.*

The Chai Chee Trail is a part of Ping Yi Secondary School's annual, level-wide Character and Citizenship Education Programme. Through the heritage and virtual trail of 7 stations, participants will be better able to appreciate how this Chai Chee community spirit has evolved stronger in tandem with the progress of our nation.

Our Chai Chee Community

From a “village market” to a modern bustling neighbourhood

1920s

Hardworking Community

Chai Chee began life in the 1920s as a Chinese village of attap huts set with coconut and banana trees. It was known as Kampong Chai Chee. In Chinese, “Chai Chee” means “vegetable market” (菜市). The whole area had many farms all over the rolling hills.

1930s

A School for the Community

Pin Ghee Public School was first founded in 1930 by the villagers of Kampong Chai Chee before the Second World War. The aim was to provide a conducive and convenient place of education for the children in the village. In the early years, there were only two classes — one was for children who were completely illiterate, while the other was for those who already had some basic proficiency and education. All lessons were taught in Chinese.



你好! I am Ah Seng.
Welcome to my Kampong Chai Chee.
Can you guess my occupation? Many people here in Chai Chee do the same work as I do!

1960s

Serving the People

Urban development began in the late 1960s, when 40 blocks of flats were built. It was one of the first Housing and Development Board estates to be built in the eastern part of Singapore. Community amenities were provided, such as a market, food centre, shops, banks, library, clinics, community center, kindergarten and a bus terminus. To provide for employment, there were 3 factories built — Rollei Cameras, Varta Batteries and Nippon Miniature Bearing.

1970s and 1980s

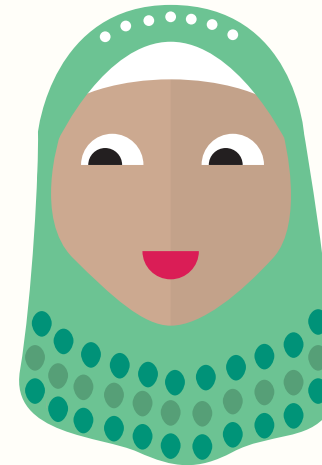
From Kampong to Modern Estate

The old market at Peng Ann Road and Peng Ghee Road moved to Blk 29, Chai Chee Road. The town square of Chai Chee is located in the Ansar Gardens Neighbourhood where many shops, restaurants and coffee-shops can be found. The estate today is multi-racial and the evidence of social harmony can be seen in the various places of religious worship situated in close proximity.

1990s & the 2000s

A Town for the New Century

Chai Chee today combines a lovely mixture of quiet village charm with a quest for progress. Its proximity to other larger estates means that the conveniences of malls and business parks are never far away, yet the estate itself retains the peace and tranquillity that has always characterised it.



Selamat pagi! I have lived here in Chai Chee area ever since I was born. I am so glad Singapore is my home.

The Chai Chee Trail

Participate in a traditional walking trail or be immersed in a virtual trail using a handphone app.

Learn about the heritage and significance of the 7 stations in the trail using the information panel of the app. Complement the information with video clips of residents who have contributed and benefitted from the community.

Be challenged by trivia activities/games at each of the 7 stations in the handphone app.

With the use of the app, any individual will be able to experience this Trail any time, any where!

1 Ping Yi Secondary School and Our Archives



Founded in 1930 as a Chinese school to serve the village community, Pin Ghee Public School has a long and colourful history, and was even a centre for the infamous Sook Ching Operations at the start of the Japanese Occupation.

Available in Handphone App



video clip



image gallery



heritage corner onsite

2 Chai Chee United Temple



This unique temple was given this name (Cai Shi Lian He Gong) because it combined 3 smaller temples and housed them under one roof as one large temple right here in Chai Chee.

3 SATA Uttamram Clinic



A long-time institution of Chai Chee, this clinic was opened in 1962 to help residents fight tuberculosis and promote better health standards.

4 Bethesda Cathedral



Located here since 1994, this Protestant church has a very active Social Concerns Programme to meet the needs of Chai Chee residents.

5 Masjid Al-Ansar



Since Chai Chee evolved from a Chinese village to a multi-racial estate, the mosque was built in 1981 to cater to the spiritual welfare of the growing Muslim population here.

6 "Club Row" – Blk 21 to 39

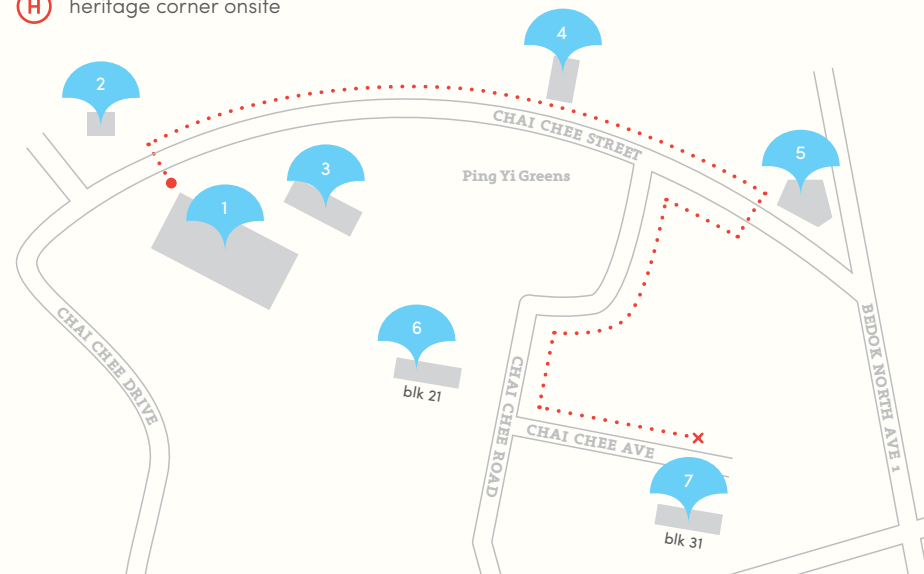


Many farms, homes and shops were located in this general area. Farmers would sell their produce in the market amidst the noise and chatter of customers. Nearby clubs and societies promoted social integration and welfare. Several of these clubs remain in this area up till today.

7 Ansar Gardens shops and eateries



Several shops and services in this central area date back to the first building of the HDB flats in the late 1960s. This lively and bustling area continues to be the centre of Chai Chee estate even today.



- quick walking trail
- start point
- landmarks
- end point



In Appreciation

Ms Grace Yap & Ms Lynn Teo,
School of Infocomm,
Republic Polytechnic

Kampong Chai Chee Citizens'
Consultative Committee

SATA Uttamram Clinic

Youths Improvement Association

Al-Ansar Mosque

Bethesda Cathedral

Chai Chee United Temple



Hello! The villagers in Chai Chee built my school right here back in the 1930s.

Please scan QR code to access virtual trail

